

**MorphiusDisc Mfg**

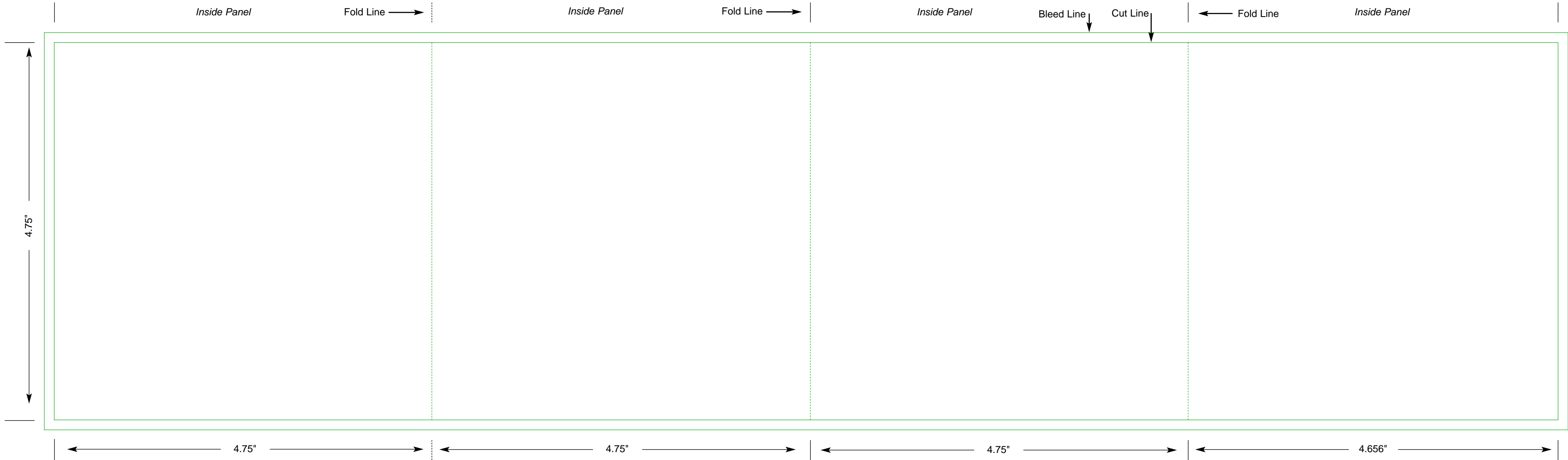
Designer:

Phone:

Email:

### 8 Panel Half and Half Fold

- All images must extend to the Bleed Line. Please be aware that the inserts will be cut along the Cut Line. All text and vital information should be kept from within and 1/8" from the Cut Lines.
- All supporting files must be at 300 DPI resolution and must be in either Grayscale or CMYK color mode.
- Please include all supporting files and fonts when sending in your artwork.
- Please call 410-662-0112 with any questions.



**MorphiusDisc Mfg**

Designer:

Phone:

Email:

**8 Panel Half and Half Fold**

- All images must extend to the Bleed Line. Please be aware that the inserts will be cut along the Cut Line. All text and vital information should be kept from within and 1/8" from the Cut Lines.
- All supporting files must be at 300 DPI resolution and must be in either Grayscale or CMYK color mode.
- Please include all supporting files and fonts when sending in your artwork.
- Please call 410-662-0112 with any questions.